

US10

15-35kV URD Cable Insulation Chamfering Tools

Introducing the innovative US10 Cable Insulation Chamfering Tool that utilizes a size adjustment clamping system to quickly and easily adjust and lock onto the insulation. Its compact, low friction, thermoplastic V-jaw construction and PTFE-coated aluminum frame provides a stable and precise clamping platform in any space.

Features

- Equipped with safe, recessed blade to prevent potential injury & blade damage
- Easily adjusts to suit XLPE & EPR insulation materials on 0.55" to 2.36" (14 mm to 60 mm) cable diameters
- Performs a 30° angle bevel with a factory-set chamfer depth of 0.075" (1.905 mm), adjustable from 0" to 0.150" (0 mm to 3.81 mm)
- Features a replaceable, machined & ground tool steel blade



Compatibility

PART #	CABLE DIAMETER OVER INSULATION	COMPATIBLE INSULATION	ADJUSTABLE CHAMFER DEPTH	REPLACEMENT BLADE PART #
US10-7000	0.55" to 2.36" 14 to 60 mm	XLPE EPR	0" to 0.150" 0 to 3.81 mm	US10-7500



Easily adjusts to support cable with diameters from 0.55" to 2.36".



Chamfer depth is adjustable to accommodate various insulations.



Recessed blade assures safety & is easily replaced.



Unique, low-friction V-jaw provides precise & accurate clamping.

Make Cable Preparation Easier

With Additional Ripley® Products



RCC

Ratchet Cable Cutter

- Easily cuts through copper, aluminum, solid & stranded conductors
- Not suitable for steel or ACSR cable
- Quick-release thumb lever enables user to halt operation & remove if necessary

MODEL	PART #	CABLE SIZE Ø
RCC	34925-2	Up to 1.75" Up to 44.45 mm

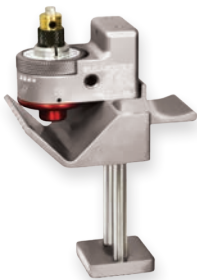


QC-2

Quick Cable Clamp

- Easy-to-use, heavy duty aluminum clamp quickly attaches to stop jacket stripping operations
- Convenient ratchet allows for relocation of handle position

MODEL	PART #	CABLE SIZE Ø
QC-2	43970	0.5" to 2.5" 12.7 to 63.5 mm



SCS

Semi-Con Scoring Tool

- Provides accurate semi-con scoring; capable of longitudinal & spiral cuts
- Precise & easily adjustable blade depths from 0" to 0.16" (0 to 4 mm) in increments of 0.002" (0.05 mm)
- Compact design for easy use & storage

MODEL	PART #	SCALE	CABLE SIZE Ø
SCS	43630	Customary	0.31" to 1.77"
SCS	43625	Metric	8 to 45 mm



WS 76

Semi-Con Shaving Tool

- Easily transitions between spiral shaving to cutting bevelled edges at 20°
- Accurately removes semi-con jacket within 0.984" (25 mm) & semi-con shield within 0.275" (7 mm)
- Precision blade adjusts in 0.004" (0.1 mm) increments

MODEL	PART #	CABLE SIZE Ø
WS 76	43580	0.71" to 2.36" 18 to 60 mm



RFNP Series

Flat Nose Pliers

- Comfortable, ergonomic & slip-free dual-compound thermoplastic grips
- 10⁶ to 10⁹ ohms/sq surface resistance per IEC 61340-5-4 for ESD workstations
- Drop-forged, hardened & tempered steel alloy for strength & longevity

MODEL	PART #	TYPE	LENGTH
RFNP-S	46475	Short Nose	5.1" (130 mm)
RFNP	46474	Long Nose	5.7" (145 mm)



IC Series

URD Insulation Chamfer Tools

- Chamfers 15 to 35 kV cable to 45° bevel, 0.125" (3.17 mm) in length
- Ideal tool for premolded splices, elbows & terminators with safe, recessed blades to prevent injury & blade damage
- Easily adjusts to accommodate XLPE & other cable insulations

MODEL	PART #	CABLE SIZE Ø
IC 1	34760	0.65" to 1.26" 16.51 to 32.0 mm
IC 2	347825	1.25" to 1.875" 31.75 to 47.63 mm